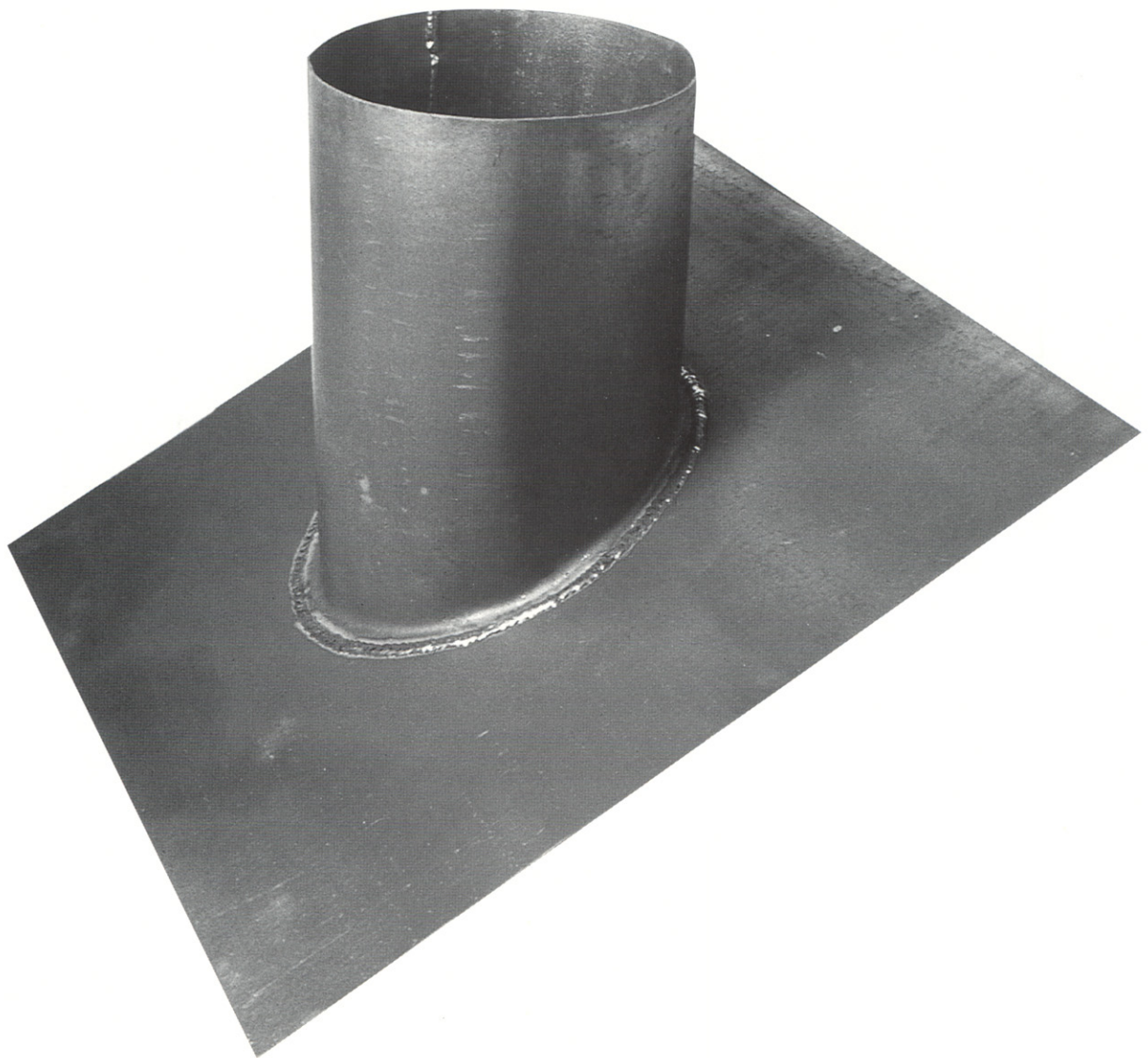


LEAD FLASHINGS



Lead Flashings

- These Dimensions are for flat, 15° or 30° slates, 45° or steeper pitch may require larger bases.
- Please note our actual I.D. is 5/8" oversize (16mm) unless otherwise requested.
- Slates can be supplied in 3lb or 4lb Lead
- Angles refer to the pitch of roof i.e. angle x° in the diagrams
- Other configuration of slates can be supplied on request.
- Peak flashings are also available.

A	B	C
Size	Base Size	Collar Height
100 mm	450 Sq.	215 mm
125 mm	450 Sq.	215 mm
150 mm	450 Sq.	215 mm
175 mm	600 Sq.	290 mm
200 mm	600 Sq.	290 mm
225 mm	600 Sq.	290 mm
250 mm	600 Sq.	290 mm
275 mm	750 Sq.	290 mm
300 mm	750 Sq.	290 mm

